

Vision for a Sustainable Tahoe Basin

7-16-06 draft

Placer County
Community Workshop #3
July 18, 2006

July 2006 placerville vision summary

4 2007 State Plan's Basic Responsibilities

Regional Planning Partners

Vision for a Sustainable Tahoe Basin

Agenda

- Introduction
- Emerging Place-Based policy themes
- Place-based summaries
- **BREAKOUT TEAMS**
 - Concept discussion
 - Implementation considerations
 - BIG strategies
- Summary and next steps

Regional Planning Partners

Pathway 2007 • Place-Based Visioning

Vision for a Sustainable Tahoe Basin

What is Pathway 2007?

The Partners
TRPA
US Forest Service
Lahontan
Nevada Dept of Environmental Protection

- TRPA Regional Plan Update
- USFS Forest Plan
- Lahontan Basin Plan Update/TMDL
- NDEP TMDL

Regional Planning Partners

Pathway 2007 • Place-Based Visioning

Vision for a Sustainable Tahoe Basin

Process

- Community Workshop #1: **Opportunities** (March)
- Community Workshop #2: **Alternative Futures** (May)
- Community Workshop #3: **Strategies for Success** (July)

Regional Planning Partners

Pathway 2007 • Place-Based Visioning

Vision for a Sustainable Tahoe Basin

Place-Based Themes

- **Gathering Places**— places with social and economic gravity—and image
- **Mobility**— environmental benefit, recreational experience, quality of life
- **Housing**— “the right thing to do”, economic development necessity
- **Recreation**— life style, economy, habitat/healthy lake and forest

Regional Planning Partners

Pathway 2007 • Place-Based Visioning

Vision for a Sustainable Tahoe Basin

Dimensions of Regenerative Planning Framework

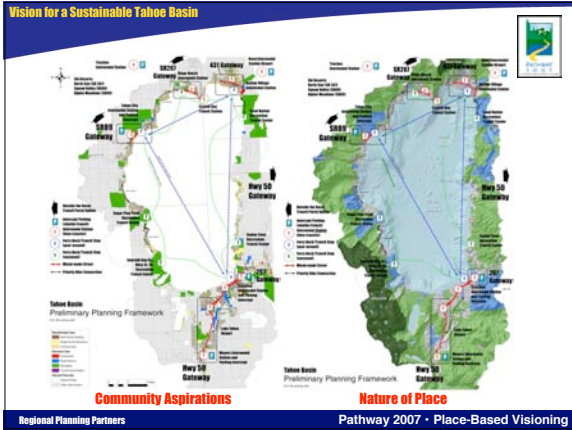
Healthy ecology has:

- An evolutionary capacity to heal itself
- A spreading, complex growth pattern of life and death cycles
- Community, engineered global systems evolving together.

Attributed from diagrams from: Roy Cole, University of British Columbia and Willem Stead of Ingenuity Design Collaborative

Regional Planning Partners

Pathway 2007 • Place-Based Visioning



Vision for a Sustainable Tahoe Basin

Forum and Planning Working Groups Workshop

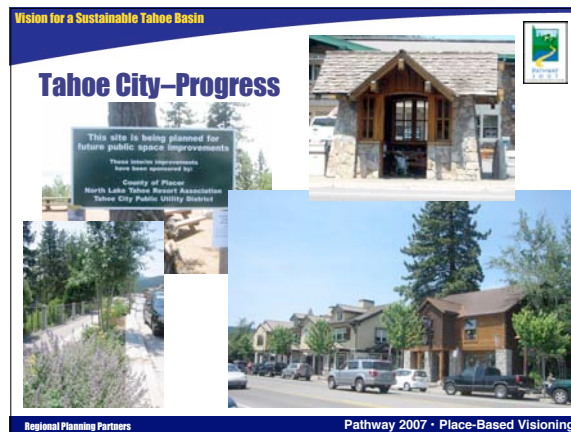
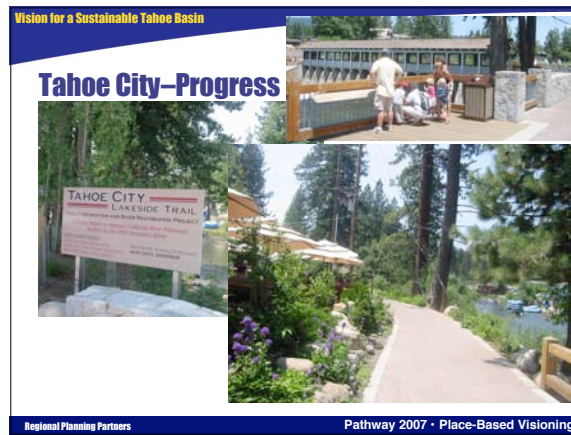
Implementation Considerations

- Strategically attracting public and private investment;
- Aligning regulations with policies and objectives for the Basin;
- Anticipating the needs of future visitors to public lands;
- Coordination of transportation services (six "F"s" of transit); and
- Continuing to restore natural lands/habitat.

BIG Strategies

- Creating a "third world" transit system that accommodates the variety of visitors needs
- Connecting vibrant mixed-use centers and transit systems (and hubs)
- Create a separate transit authority for the Basin
- Preparing common sense policies and ordinances to meeting environmental, social and economic objectives for Basin

Regional Planning Partners Pathway 2007 • Place-Based Visioning





**Placer's Basin Communities:
A 2027 Story**

Arriving in one of the main street beach towns in North Lake Tahoe instills a sense of anticipation; and desire to experience the natural places in the Tahoe Basin. People gravitate to the North Shore's variety of accommodations, alluring restaurants, imaginative retail storefronts and beachside neighborhoods. They stay overnight by the beach and bike and hike to the mountains. Each community works for visitors and for locals— it's easy to get around, there's a variety of housing choices, and a strong sense of community—all in a beautiful well planned place.

Regional Planning Partners Pathway 2007 • Place-Based Visioning



**Placer's Basin Communities:
A 2027 Story**

2027—North Lake Tahoe's welcoming gateway communities benefit from the concerted efforts to coordinate the design of roadways, new buildings, recreational and community facilities.

2027—Reinvestment in Tahoe City, Kings Beach and other smaller mixed-use places around Lake Tahoe has greatly enhanced the communities' appearance and created social focus. This enhanced appearance and redeveloped lodging properties have been accomplished while improving water quality, increasing public use of transit and leading to a stable and growing year round local economy.

Regional Planning Partners Pathway 2007 • Place-Based Visioning



**Placer's Basin Communities:
A 2027 Story**

2027—The most popular ways of experiencing North Lake Tahoe are not by car. Traveling along the completed bike trail from Kings Beach to Tahoe City's water transit piers have become a favorite day-trip for visitors.

2027—There has been a measurable improvement in lake clarity in the past ten years. Roadways have been designed to capture run-off, improvements to older parking lots and landscaping have made a difference.

2027—The success of Placer's communities can be traced to a regional plan, development codes, and incentives that have rewarded public and private investment consistent with communities' aspirations.

Regional Planning Partners Pathway 2007 • Place-Based Visioning


Vision for a Sustainable Tahoe Basin



Opportunities for Investment

- **Valued Places:** Lake Tahoe, Mountains and Forests
- **Areas of Opportunity:** Community Centers and Restoring Watersheds/Forests
- **Greatest Opportunities:** Kings Beach

Regional Planning Partners Pathway 2007 • Place-Based Visioning



Guiding Principles

Principle 1: Reinvest in and Revitalize Existing Centers
Reinvestment and revitalization should take place in Placer County's existing Basin community centers; this is preferable to developing new community centers.

Principle 2: Enhance Placer County's Basin Gateways
Investment in Placer County Basin gateways shall improve their image and vitality. Gateways should be designed and planned as integral parts of the Lake Tahoe travel experience.

Regional Planning Partners Pathway 2007 • Place-Based Visioning




Guiding Principles

Principle 3: Improving Connections
Public and private investments in Placer County's Basin communities should contribute to improved vehicular and non-motorized connections to commercial centers, neighborhoods, visitor attractions and recreation. Highway design should improve economic vitality and pedestrian safety and comfort.

Principle 4: Area-wide
Environmental improvements solutions for safeguarding and improving water quality and other environmental improvements should be approached at the broader, area-wide scale, rather than one parcel or project at a time.

Regional Planning Partners Pathway 2007 • Place-Based Visioning



Guiding Principles

New Principle

Principle 5: Local Government Cooperation

Local governing bodies should collaborate on policies and investments in- and out-of-the Basin. This should include land use planning, economic development, marketing, transit, housing, recreation, and mitigating associated environmental impacts.

Regional Planning Partners Pathway 2007 • Place-Based Visioning



Key Planning Concepts

Concept 1: Revitalizing the Centers of Existing Communities

Concepts for revitalizing Placer County's Basin communities' centers require a comprehensive approach; creating successful mixed-use districts, improving accommodations and inviting public gathering places.

- Mixed-use future
- Variety of accommodations
- Workforce housing
- Connections to neighborhoods
- Improving the image

Concept 2: Planning Placer County's Basin Gateways

Concepts for the Tahoe Basin gateways treat them as integral parts of the Lake Tahoe travel experience and improve their image and vitality.

- Lake Tahoe arrival
- Kings Beach/SR267
- Tahoe City
- Hwy89/Truckee River

Regional Planning Partners Pathway 2007 • Place-Based Visioning



Key Planning Concepts

Concept 3: Mixed-mode Transportation Strategies

Public and private investments in Placer County contribute to improved vehicular and non-motorized connections to commercial centers, residential neighborhoods, visitor attractions and recreation. Highways are designed to improve economic vitality and pedestrian safety and comfort.


- Managing downtown parking
- Mixed-mode main streets
- Completing bike connections
- Frequency of service/headways

Concept 4: Area-wide Environmental Improvements

Opportunities to improve water quality and other environmental conditions are addressed immediately, including projects currently funded and under design. Solutions for safeguarding and improving water quality and other environmental improvements would be approached at the broader, area-wide scale, rather than one parcel or one project at a time.

- Roadway and parking design
- Commercial mixed-use districts
- Healthy forest/wild fires

Regional Planning Partners Pathway 2007 • Place-Based Visioning



- Transit and access
 - Transit centers
 - Mixed-mode Hwy 28
 - Trailhead connections
 - Bike connections to beaches/trails/communities
- Gateways
 - Natural
 - Community
- Central Districts
 - Mixed-use
 - Workforce housing
 - Variety of accommodations
- Healthy Forests
 - Urban interface
 - Habitat

Regional Planning Partners Pathway 2007 • Place-Based Visioning

Vision for a Sustainable Tahoe Basin



Assignment#1:

List three things that would make the concept plan better:

- _____
- _____
- _____

Regional Planning Partners Pathway 2007 • Place-Based Visioning

Vision for a Sustainable Tahoe Basin

Assignment#2: Implementation Considerations

- Revitalization centers of existing communities
 - _____
 - _____
- Planning Placer County's Basin gateways
 - _____
 - _____
- Mixed-mode transportation strategies
 - _____
 - _____
- Are-wide environmental improvements
 - _____
 - _____

Regional Planning Partners Pathway 2007 • Place-Based Visioning

