

City of South Lake Tahoe Draft Integrated Sustainability Vision

The City of South Lake Tahoe is creating the framework for an Integrated Sustainability Plan by engaging the public in a community-based process designed to be inclusive, interactive and informed.



The City has acknowledged the impacts of climate change and is committed to doing its part to reduce GHG emissions and manage for potential impacts. **The concept of sustainability has started to guide City policy.** The long-term impacts of policy choices will be considered to ensure a sustainable legacy. The City is committed to meeting its existing needs without compromising the ability of future generations to meet their own needs.

A fall public workshop will explore issues and themes of a draft sustainable city vision. The Sustainability Plan for the City of South Lake Tahoe will build on existing projects, programs and policies and customize a sustainability strategy, tailored to the specific needs, challenges and opportunities of the City.

New investment in the City should “set the green bar high” and demonstrate leadership in sustainable design. New investment and redevelopment should be designed to last and encourage a focus on environmentally sensitive planning, including:

- Supporting “Green” transit (low and zero-emission transit);
- Focusing on a mix of land uses that support transit use;
- Emphasizing infill instead of Greenfield development;
- Using alternative energy sources and infrastructure investment;
- Incorporating “Cradle to cradle” design solutions and green building for new construction; and
- Planning for infrastructure that improves water and air quality.

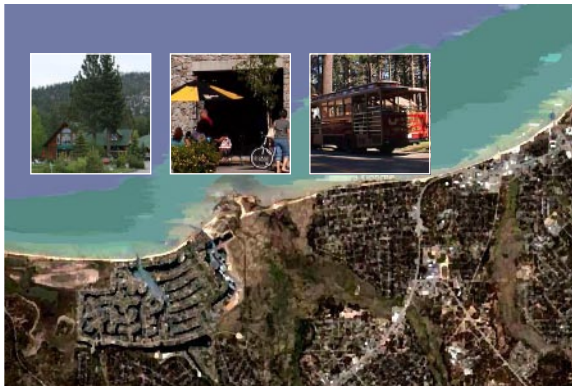


Regional Planning Partners

PO Box 1803
Truckee, CA 96161

Sustainability
Community
Design

Regional Planning Partners
www.regionalplanningpartners.com



DRAFT Sustainability Concepts

- 1) Green Infrastructure
 - a. Reducing Energy and Resource Usage
 - b. Solid Waste Reduction and Recycling
 - c. Water and Waste Water Reduction
- 2) Lake Clarity and Watershed Restoration
- 3) Complete Community
 - a. Strengthened Neighborhoods
 - b. Pedestrian-oriented Mixed-use Centers
 - c. Enhanced Gateways and Places
- 4) Environmentally-Friendly Transportation
 - a. Pedestrian and Bicycle Improvements
 - b. Design “Complete Streets”
 - c. Waterborne Transit
 - d. Transit Efficiency, Service and Convenience
- 5) Vibrant Local and Regional Economy
- 6) Diverse Housing
- 7) Forest Health and Recreation
- 8) Community Facilities and Education
- 9) Healthy Food System
- 10) Green Buildings

July 2008

Work In Progress

City of South Lake Tahoe Integrated Sustainability Vision



RPP is working on behalf of the City of South Lake Tahoe and the California Tahoe Conservancy to create a sustainability plan and vision for the City.

This three step process involves:
1) developing and confirming a sustainability vision
2) working with a Sustainable City Committee of diverse interests, and
3) running a public process to confirm the vision.

This open and transparent process will build on work already completed and create a framework to assist with a variety of city-wide programs and projects.

Vision

Issues and Themes

Actions and Strategies

Framework

Implementation Plan

Draft Sustainability Concepts for the City of South Lake Tahoe



Definition of Sustainability

“Humankind has the ability to achieve sustainable development—to meet the needs of the present without compromising the ability of future generations to meet their own needs.”

- The Brundtland Commission

On July 30, 2008 community leaders gathered to review and revise 10 draft sustainability concepts. The following concepts were adapted from past visioning efforts, including Place-Based Planning and Regional Visioning, the City’s General Plan update and adopted Guiding Principles.

1. GREEN INFRASTRUCTURE

Create comprehensive “green” infrastructure strategies to address sustainability objectives in the supply and management of energy, solid waste and materials, water and waste water.

Reducing Energy and Resource Usage



- Develop a comprehensive strategy to reduce GHG emissions and climate impacts
- Increase energy efficiency, reduce emissions and support local, clean and renewable energy sources
- Shift away from reliance on non-renewable sources
- Incorporate climate change into general plans

Solid Waste Reduction and Recycling



- Increase economic efficiency and performance by reducing the consumption of non-renewable resources
- Promote reduction, re-use and recycling
- Divert solid waste from the landfill including household, commercial, construction and site/forest clearing waste
- Implement recycled content and green procurement policies

Water and Waste Water Reduction



- Use water more efficiently in our homes, businesses and landscapes, and manage runoff that maintain natural hydrological regimes
- Develop an innovative water and waste water management strategy that considers water supply and treatment systems
- Reduce demand for potable water through water recycling and reuse of treated water

2. LAKE CLARITY AND WATERSHED RESTORATION



Respond to the clarity challenge. Improve stormwater management with green streets and innovative best practices. Move toward area-wide planning and design and work to accelerate urban water quality improvements and environmental threshold implementation.

- Incorporate new functional open spaces in redeveloped areas to serve as both public amenities and to provide

- opportunities for urban water quality improvements
- Develop a coordinated stormwater management system to minimize runoff, improve area-wide stormwater retention and reuse
- Improve stormwater quality management with use of swales and natural treatment systems and integration of runoff into functional design elements and public art
- Utilize green streets to manage stormwater, reduce flows, improve water quality and enhance watershed health
- Explore pervious materials for parking areas and test on some street sections

3. COMPLETE COMMUNITY



Develop a complete community that offers its residents the opportunity to work, live, play, shop and learn within a convenient walking or transit distance. Reduce energy, water use and vehicle miles traveled (VMT) with efficient land use planning.

- a. Strengthened Neighborhoods
- b. Pedestrian-oriented Mixed-use Centers
- c. Enhanced Gateways and Places

- Implement Smart Growth principles to create walkable, mixed-use centers, compact neighborhoods, and enhanced gateways and places
- Promote infill and reinvestment to increase density within walking distance of transit stops
- Protect and restore key riparian areas and natural features
- Commercial uses in community plan areas should complement each other not compete
- Improve connections and access to a wide range of recreational opportunities, which will improve the quality of life of residents and visitors

4. ENVIRONMENTALLY-FRIENDLY TRANSPORTATION



Reduce dependence on the automobile by providing increased mobility options. Encourage pedestrian/transit-oriented redevelopment to reduce emissions and vehicle miles traveled.

- Improve bicycle and pedestrian connections between all neighborhoods and communities with sidewalk and multi-use trail network enhancements
- Design “complete streets” that are safe for pedestrians with multiple mobility options in mind
- Create regular/dependable waterborne transit for residents and visitors
- Improve transit efficiency, service and convenience to encourage use
- Incorporate parking management strategies that strive to create park-once environments, including parking maximums, shared-use parking for mixed-use projects and on-street parking

5. VIBRANT LOCAL AND REGIONAL ECONOMY



Sustainability recognizes the need for both local and regional economic prosperity and resilience to maintain the health of the community. It encourages self-reliance, entrepreneurial activity and the generation of wealth to occur in a manner that does not undermine the ability of individuals and communities to meet their basic needs.

- Provide economic opportunities for investment, businesses and employment that will support an economically diverse and prosperous year-round community
- Ensure infrastructure, community facilities and the health of the Lake and forest are improved with new investment and economic growth
- Create live/work and work/live opportunities with flexible buildings and mixed-use zoning that allows local businesses to grow and evolve over time
- Encourage the adoption of green business practices and other systems that enhance both the environmental and economic performance of businesses in the community
- Become a leader in green building implementation and new emerging technologies for mountain communities

6. DIVERSE HOUSING



Strive to maintain a permanent year-round population that supports community services, social equity and economic vitality.

- Offer a wide range of diverse housing opportunities, both ownership and rental, for all income levels
- Integrate green and sustainable construction into all new housing units, neighborhoods and mixed-use centers.

7. FOREST HEALTH AND RECREATION



The City of South Lake Tahoe is blessed with its natural surroundings, access to wilderness and the Lake. Trail facility upgrades are improving access and the opportunity to recreate.

- Connect surrounding forests to urban open spaces, parks, natural areas and SEZs to encourage biodiversity and healthy habitat
- Design into Lakeview Commons a central gathering place with passive and active recreational opportunities

- Maximize the use of native plants in landscaping
- Create management zones that help to minimize use of irrigation and pesticides
- Incorporate recycled gray water and roof water as a “purple pipe” system for irrigation where appropriate

8. COMMUNITY FACILITIES AND EDUCATION



Provide community facilities that support a healthy lifestyle for both residents and visitors. Create a public education, awareness and capacity building program as an important component of the plan.

- Create a vibrant social community that promotes safety and encourages residents to meet
- Develop a strategy to provide amenities and facilities that supports quality of life for all ages groups
- As the City is currently spread out, locate facilities within proximity to public transit and surrounding neighborhoods
- Identify action items for residents and businesses that improve energy efficiency and reduce environmental impact

9. HEALTHY FOOD SYSTEM



Climate and elevation make local food production a challenge. Work toward a vibrant and sustainable regional food system that connects fresh, healthy and local food (100 to 150 miles) to residents, grocers, casinos and restaurants. Encourage the development of markets and restaurants within convenient distances of all residents to reduce driving, increase local economic activity, and increase quality of life.

- Look at a regional food network as an economic development tool to build health and wealth
- Provide assistance to connect food establishments with consumers and producers
- Encourage locally owned and ecologically sound storage and distribution infrastructure
- Design a permanent year-round public market in the City to serve as a community gathering place
- Encourage gardening in neighborhoods with good soils, access to water and sunlight
- Encourage organic food supply

10. GREEN BUILDINGS



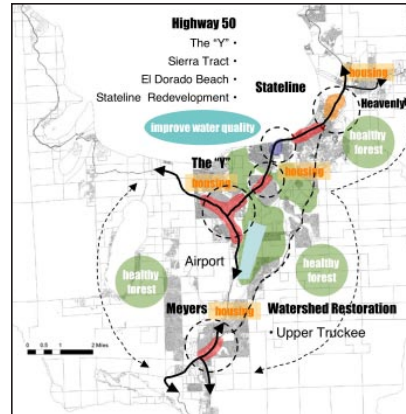
New buildings are long-term investments and should feature quality design/materials, flexible design to deal with changing demands and be built green. Develop a green building strategy to encourage redevelopment, compact neighborhoods, mixed-use centers and address: energy efficiency; solar design; indoor air quality; green roofs; water efficient fixtures; etc...

- Incorporate energy efficiency in city buildings and facilities
- Provide clear incentives for green buildings and consider phasing in the green rating system or LEED certification
- Establish a green demonstration program for a variety of building types including single family, commercial industrial, townhouses, apartments, and mixed-use projects

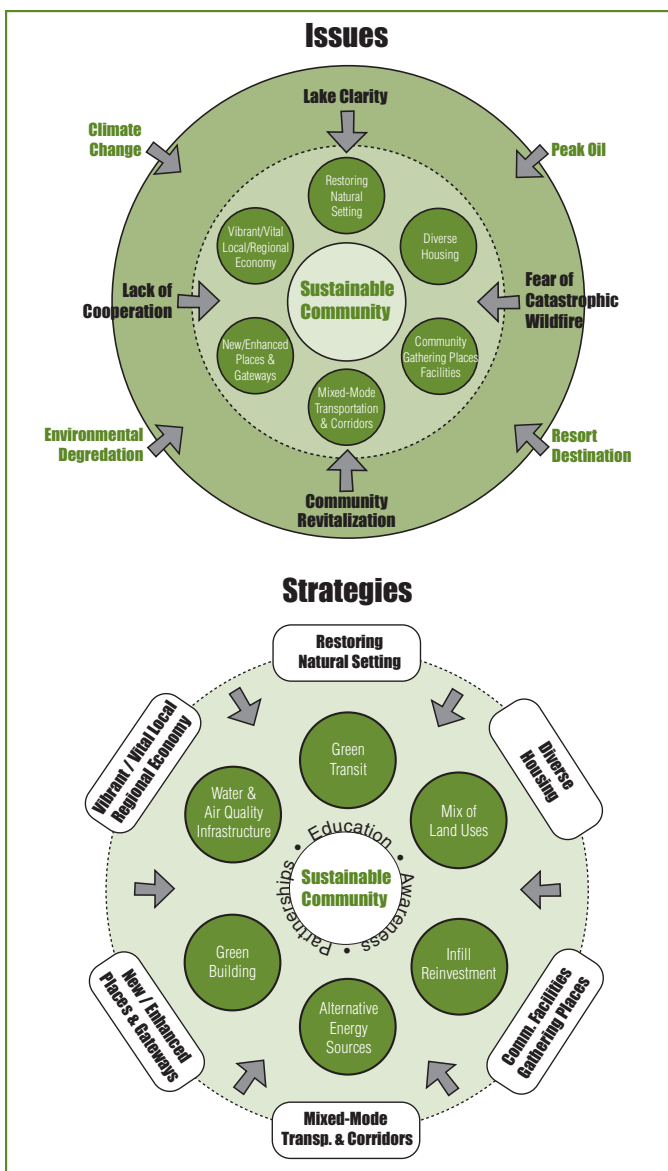
NEXT STEPS



The Sustainability Plan for the City of South Lake Tahoe will help to inform city planning and become a framework for decision-making and project prioritization. A successful sustainability program will involve the public and private sector working together and taking steps to move toward sustainability. By implementing key sustainability strategies and pursuing an integrated approach, the city will increase its livability and prosperity, reduce the ecological footprint of its residents and improve human and ecological health.



Sustainability options for neighborhoods, mixed-use centers and Main Streets.



SNAPSHOT OF WORKS IN PROGRESS

Local Projects and Programs

- California Tahoe Conservancy and City Partnership
- City Smart Growth Principles
- City-Wide Waste Reduction and Recycling Program
- City of South Lake Tahoe General Plan Update
- City of South Lake Tahoe Sustainability Goals and Policies
- League of California Cities Environmental Policy Committee Participation
- LEED-certified City Joint Use Building/Emergency Operations Center
- California Conservation Corps Base Center
- Stormwater Master Plan
- Bijou Area Erosion Control Plan
- Residential Green Buildings Built by Local Builders
- BlueGo Service Restructuring
- Maximized use of Alternative Fuel Vehicles
- Availability of Biodeisel Fuels in the City
- South Tahoe High School Green Academy
- Lake Tahoe Community College "Green" Courses
- Chamber Green Business Program and EcoTourism
- 968 Park Hotel: Green EcoHotel
- Lakeview Commons Project
- CSLT Bicycle-Friendly Community Designation
- Improved Mass Transit with Increased Bicycle Carrying Capacity
- Education/Community Outreach: TREE
- Community Land Trust: Housing
- Voluntary Business and Residential Retrofit Program

Local and Regional Utilities

- LEED-certified South Lake Tahoe Public Utility District Office
- South Tahoe Refuse (LEED-certified resource and recovery facility)
- Sierra Pacific Renewable Energy Programs and Incentives
- Southwest Gas Corporation
- Sustainable Green Building Chapter

Regional Projects and Programs

- Community Enhancement Program
- Environmental Improvement Program (EIP)
- California Tahoe Conservancy: Urban Lot Mgmt Program
- U.S. Forest Service, Lake Tahoe Basin Management Unit Urban Lot Management Program
- TRPA Initial Parcel Evaluation System (IPES)
- TRPA Regional Transportation Plan: Mobility 2030

*"Never doubt that a small group of thoughtful, committed citizens can **change the world**. Indeed, it is the only thing that ever has."*

- Margaret Mead

For more information visit:

www.regionalplanningpartners.com